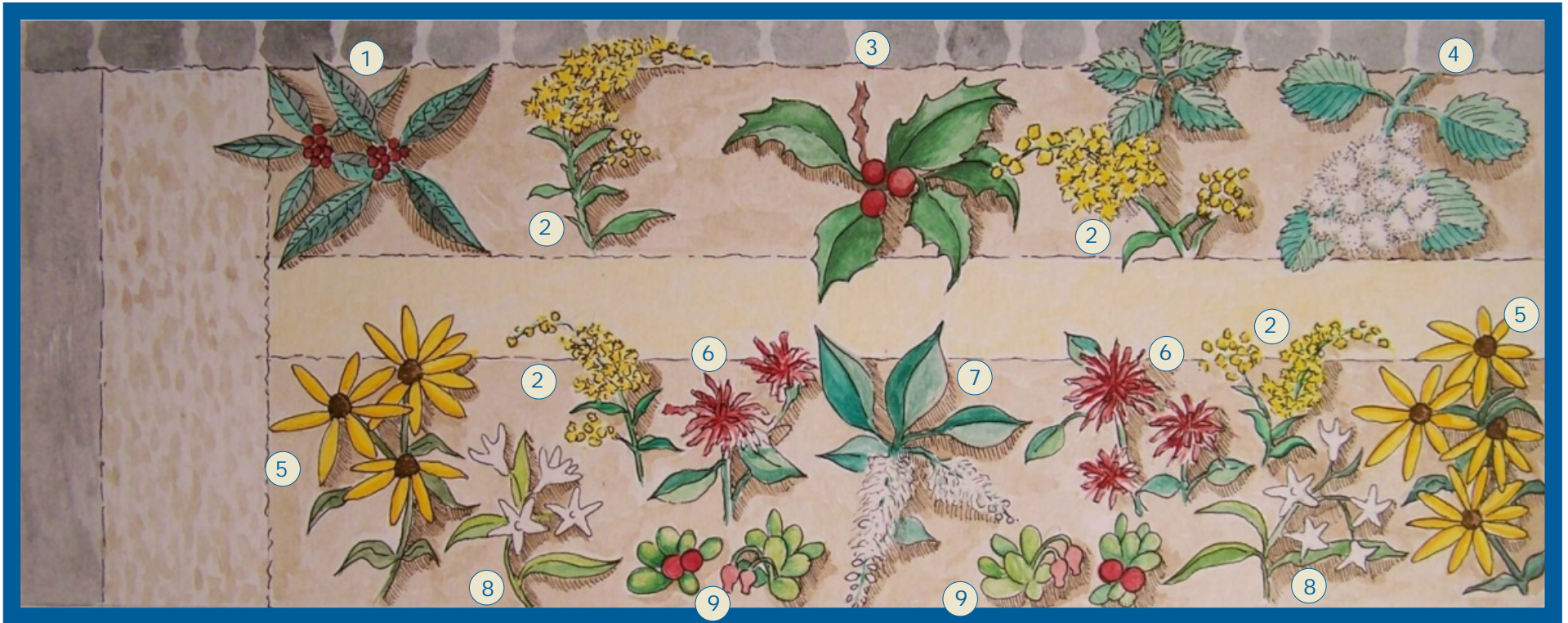


Bayscape for Barnegat Bay No. 4: Cool Colors



- 1 - Winterberry Holly (*Ilex verticillata*)
- 2 - Seaside Goldenrod (*Solidago*)
- 3 - American Holly (*Ilex opaca*)
- 4 - Arrowwood (*Viburnum dentatum*)
- 5 - Black-eyed Susan (*Rudbeckia*)
- 6 - Beebalm (*Monarda didyma*)
- 7 - Virginia Sweetspire (*Itea virginica*)
- 8 - Blue Star (*Amsonia tabernaemontana*)
- 9 - Bearberry (*Arctostaphylos uva-ursi*)

Designed to tolerate moist conditions and partial shade, this garden provides color for a cool spot. This illustration is from the guide to our coastal native plant demonstration garden at the Maris Stella Retreat & Conference Center in Harvey Cedars on Long Beach Island, NJ. We have adapted the plan for general use on page 2 and include layout, spacing, and details about each plant.

We hope you will be inspired to help reduce polluted runoff going into Barnegat Bay by planting one of these gardens in your yard.

If you do, we'd love to share photos of your results on our web site. Contact us at 732-291-0055 or helen@littoralsociety.org.

If you don't live in the Barnegat Bay watershed, these plants will thrive in most areas of New Jersey and will help improve a waterway near you.

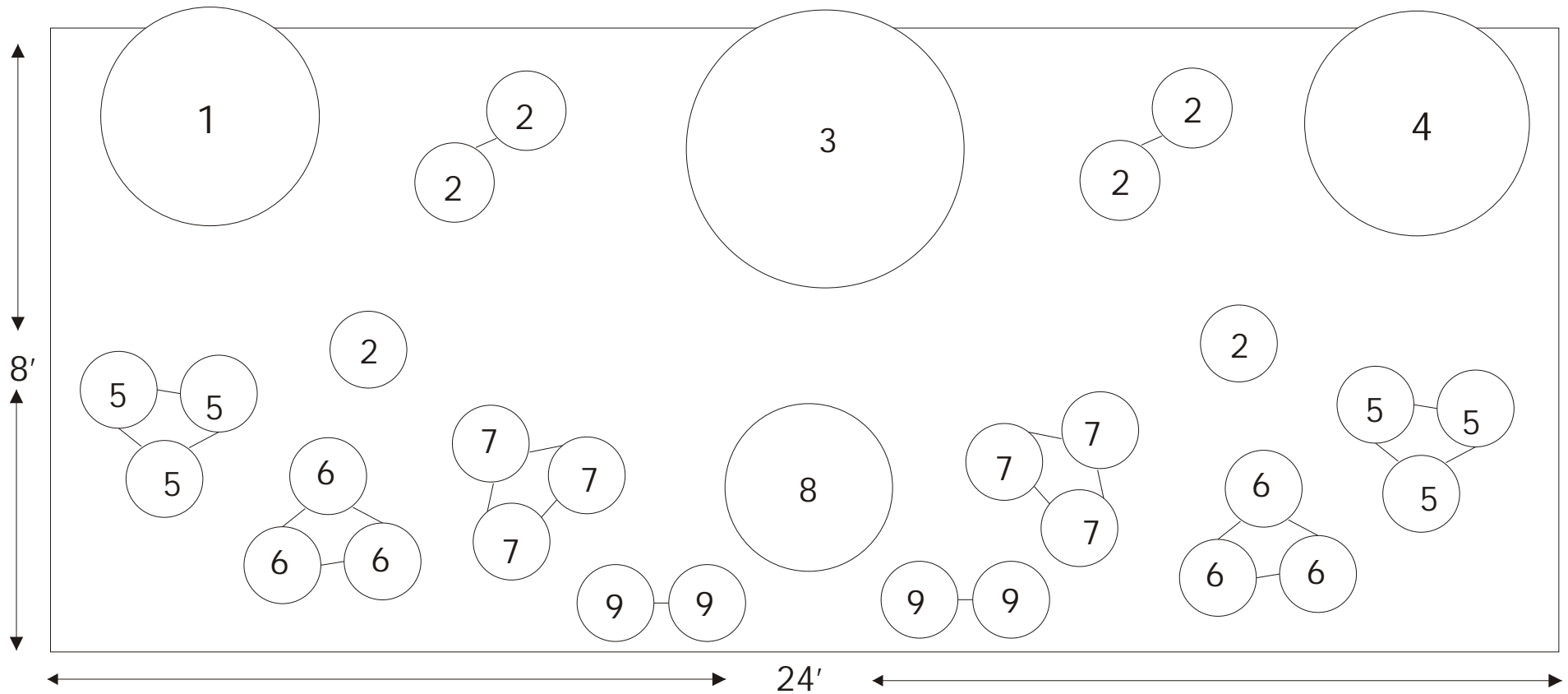
For a list of native plant suppliers visit www.littoralsociety.org/shore_stewards.aspx

Garden designed for the American Littoral Society
by Judy DeFiglio of Garden Guidance (609-693-4430)
Garden illustrations by Eileen Kennedy.

*Empowering people to
care for the coast since 1961*



Bayscape for Barnegat Bay No. 4 - Cool Colors



1. Winterberry Holly (*Ilex verticillata*) - native deciduous shrub; red, orange and yellow cultivars 4 - 15'; full sun, wet soil but some drought tolerant varieties available.
2. Seaside Goldenrod (*Solidago*) - perennial, full sun, drought and salt tolerant; 1 - 5' tall arching spikes of yellow flowers bloom late summer until frost.
3. American Holly (*Ilex opaca*) - native evergreen tree; pyramid shape; slow growing but can reach up to 50' tall and 18' wide; white flowers in spring and brilliant red or orange fruit in fall; native to seashore environments--the hardest holly.
4. Arrowwood (*Virbunum dentatum*) - deciduous native shrub grows to 6'; white flowers in showy clusters in May; bright red leaves and black berries (attract birds) in fall.
5. Black-eyed Susan (*Rudbeckia*) - Perennial 18 - 30" yellow daisy-like flowers with brown center-flower in mid to late summer; full sun; drought tolerant.
6. Blue Star (*Amsonia tabernaemontana*) - Pale blue star-shaped flowers in early spring; drought tolerant.
7. Beebalm (*Monarda didyma*) - perennial 2 - 3' tall; scarlet or pink shaggy flowers in June - July; fragrant foliage (on native); full sun.

8. Virginia Sweetspire (*Itea virginica*) - Native deciduous to semi-evergreen; arching shrub 3' to 6' tall; white "bottlebrush" flowers bloom May to June; fiery burgundy fall color and red stems in winter.
9. Bearberry (*Arctostaphylos uva-ursi*) - evergreen, low mat-forming shrub grows 6 - 12" tall, great groundcover; likes sandy soil but needs acid pH; salt and drought tolerant; full to partial sun; small pale pink flowers in spring; red berrylike fruits in late summer/fall.

American Littoral Society
 18 Hartshorne Drive, Suite 1, Highlands, NJ 07732
 732.291.0055 - www.littoralsociety.org

