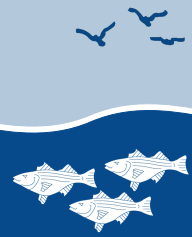




AMERICAN LITTORAL SOCIETY

Coastal Habitat Restoration Program



PROJECT SUMMARY: Coastal Watershed Conservation and Restoration Initiative

Since 2009, we have been conducting a project to help local communities and land-use managers locate sensitive estuarine areas within their communities and to identify priorities for conservation and restoration. Numerous studies demonstrate how conservation and restoration provide a multitude of benefits to the quality of life and create economic benefits in local communities.

Phase 1

With our partners, Monmouth University's Urban Coast Institute, Monmouth Conservation Foundation and Steve Taylor Associates, and funding from Farleigh S. Dickinson Jr. Foundation, we used existing geospatial data to identify priority areas with potential for conservation and habitat restoration along the Navesink, Shrewsbury, Shark, and Manasquan Rivers.

Findings

Our analysis identified restoration areas: sites that contain important natural resources that have been degraded by various factors over the years. Similarly, it identified conservation areas: relatively pristine areas that contain a multitude of sensitive natural resources and which are potential targets for acquisition and preservation.

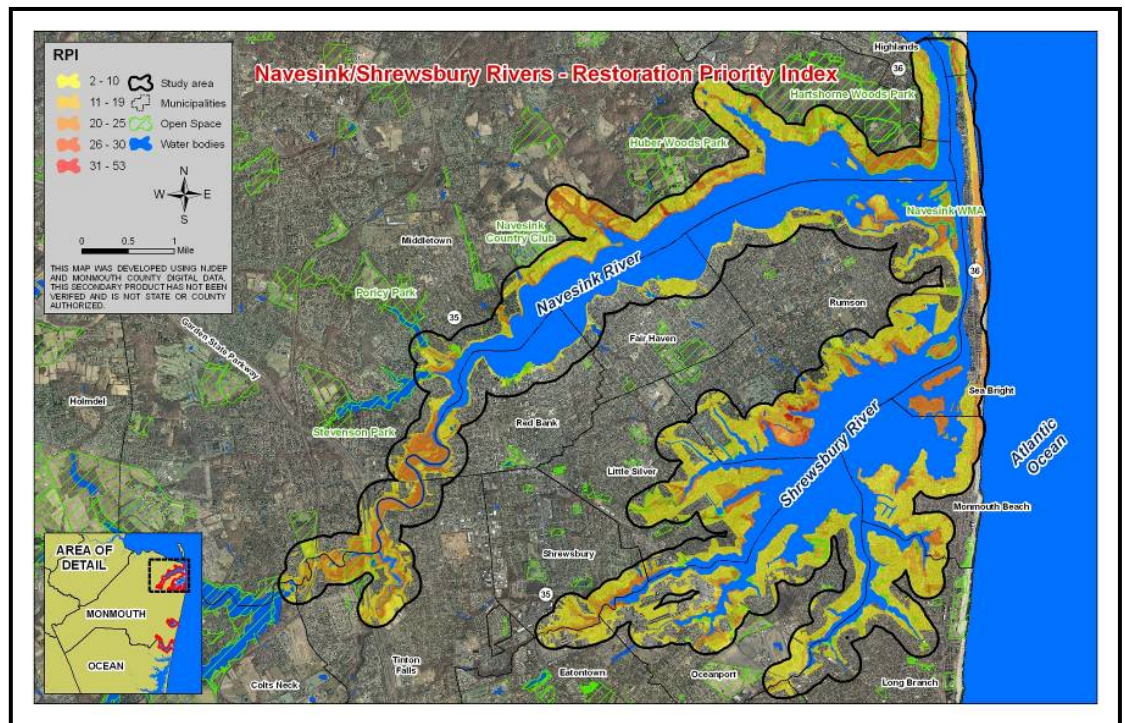
Phase 2

Since the analysis and report was completed, we have field-checked the results and met with several municipal and county officials to share the information and also learn about opportunities to move forward with them on identified sites that can serve as demonstration projects.

Next Steps

These conversations are ongoing and, currently, we at the Littoral Society are moving forward on demonstration projects to restore habitat in the Shark and Shrewsbury Rivers.

Figure: Results of the analysis showing the habitat restoration ranking for areas along the Navesink and Shrewsbury Rivers.



The full report is available on our website at <http://littoralsociety.org/restoration.aspx>

Caring for the coast since 1961